

## SPETSIGT ISMUNSTYCKE

Vårt spetsiga ismunstycke är tillverkat i härdat slitstarkt stål och har, förutom drivstrålar, 4 strålar framåt. En stråle i centrum och tre strålar i 15 graders vinkel - riktning utåt.

Spetsigt ismunstycke är lämpligt att använda:

- Vid stopp
- Vid tunnare rötter
- Is i rör
- Rörtryckning



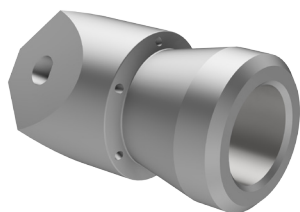
## POINTED ICE NOZZLE

Our pointed Ice nozzles are made in wear-resistant hardened steel and they have thrusting jets and four jets forward. One jet in the center and three jets pointing 15 degrees direction from nozzle.

Pointed Ice nozzle is suitable for:

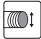








- Clogged pipe
- Thin roots
- Ice in pipe
- Hydraulic thrust boring

# SPETSIGT ISMUNSTYCKE / POINTED ICE NOZZLE



**2-11340-GMV**

**2-11540-GMV**

	½"	1"
	50-225 mm (2"-9")	100-400 mm (4"-16")
	120 l/min (30 US GPM)	330 l/min (90 US GPM)
	150 bar (2000 PSI)	
	-	-
	6 x 1,8 mm	6 x 3,0 mm
	4 x 1,0 mm	4 x 1,5 mm
	85 x 30 mm	100 x 48 mm
	0,2 kg	0,65 kg



Anslutning  
Connection



Vattenflöde vid 100 bar  
Water flow at 1450 PSI



För recycler  
For recyclers



Främre dysor  
Front jets



Vikt  
Weight



Rördimension  
Pipe dimension



Max arbetstryck  
Max. working pressure



Bakre dysor  
Rear jets



Längd x Diameter  
Length x Diameter



Övrig information  
Other information